

impact.

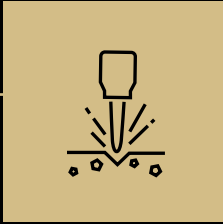
MINERALS

**Nickel Copper PGM in
NSW and WA (coming
home!)**



Perth HQ Arkun Doonia Broken Hill Commonwealth

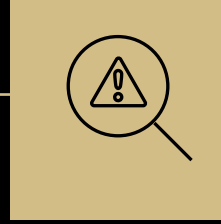
The Key to Exploration Success: Large Strategic Ground Holdings: Ni-Cu-PGM-Au Ag (Zn-Pb)



Emerging high grade Ni-Cu-PGM discovery

Broken Hill, New South Wales (IPT 100%)

- Home to the giant Broken Hill silver-lead-zinc deposit (>300 Mt)
- Large strategic ground holding of 815 sq km
- Potential for major nickel-copper-PGM mining camp over a 40 km belt
- Outstanding drill results in 2020 with follow up campaign in 2022



Early stage Gold, Ni-Cu-PGM and LCT Pegmatites

WA Projects (IPT 100% or 80%)

- Doonia, WA: walk up drill target for gold to be drilled Q4 2021.
- Arkun, WA: Large strategic ground holding of 2,000 sq km in the emerging Ni-Cu-PGE Province near Julimar (Chalice Mining NL). Surrounded by Anglo American Corporation



Other Strategic Holdings

Commonwealth, NSW (IPT: 100%)

- Home to the giant Cadia copper-gold deposit (>40 Moz Au, >10 Mt Cu)
- Large strategic ground holding of 700 sq km
- Potential for VMS deposits like Eskay Creek (4 M oz Au, 180M oz Ag)
- **Blackridge, QLD:** 150 sq km covering part of >300,000 ounce gold field

Introducing Impact Minerals (ASX: IPT)



Capital Structure

Listed on ASX	November 2006
Shares on Issue	2,023 million
Options	157M unlisted
Share Price	1.5 c
Market Cap	\$30 million
Cash	A\$2.3 million

Shareholders

Bunnenberg Family	10%
ABC Beteiligungen	10%
Directors	2.4%
Top 20	43%
Top 50	52%
No of Shareholders	3,700



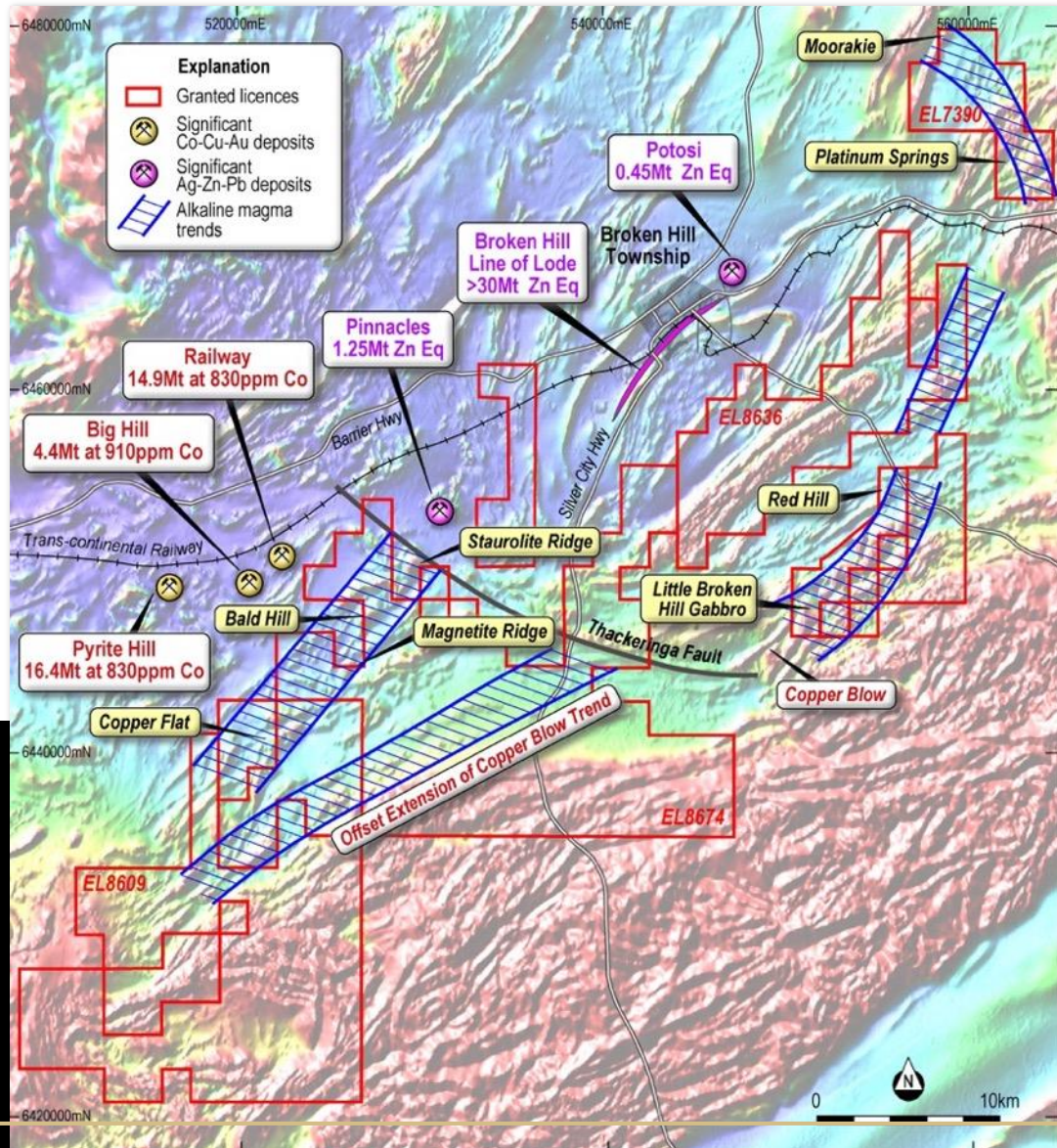
6 month
Share price

Major exploration and commodity boom in progress driven by gold, PGM's and government larceny

Broken Hill Project, PGM-Nickel-Copper, New South Wales



Broken Hill Project Overview



High grades of all six PGM's

1. Major land position of 815 sq km in one of Australia's most prolific mining belts
2. High PGM grades including rare PGM's Rh, Os, Ru and Ir
3. Multiple targets over 25 km for nickel-copper-PGM deposits
 - **Moorkai:** High grade rock chip samples over 9 km trend
 - **Platinum Springs:** high grade magmatic nickel-copper-PGE sulphide
 - **Red Hill:** Impact discovery of very high-grade PGE's
 - **Little Broken Hill:** poorly explored intrusion similar to Jinchuan and Voiseys Bay
4. Potential for million ounce PGM discovery with drilling in progress
5. Significant zinc-lead-silver potential

Magmatic Ni-Cu-PGM sulphides Moorkai-Platinum Springs¹

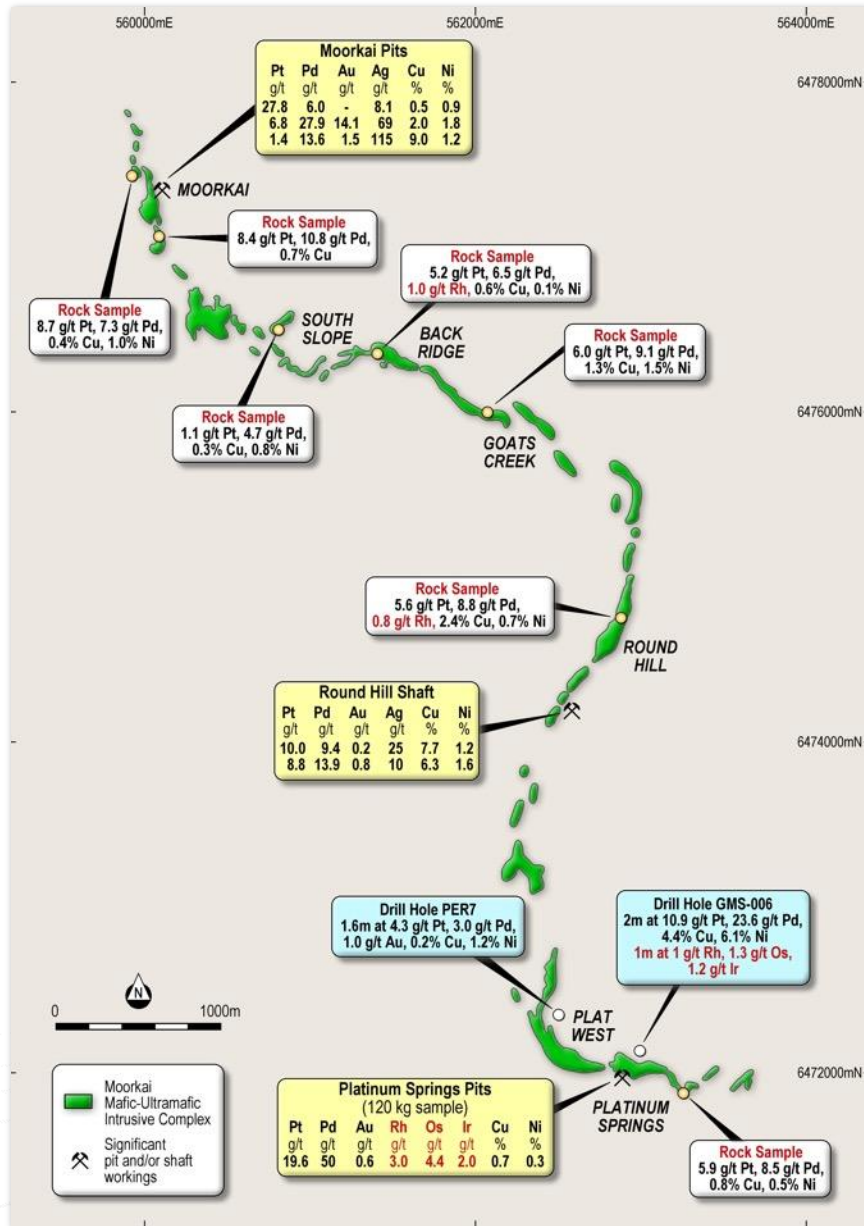


Platinum Springs

- 0.6 metres at 11.5 g/t platinum, 25.6 g/t palladium, 1.4 g/t gold, 7.6% copper, 7.4% nickel, 44.3 g/t silver, 0.16% cobalt, 1.3 g/t rhodium, 1.7 g/t iridium, 2.0 g/t osmium and 0.8 g/t ruthenium from 57.1 metres down hole within
- Richest ore in Australia?
- Southern end of the 9 km Moorkai Trend dripping in PGE's



BUT:
How to Focus?



Exploration for PGE's is DIFFICULT



They are impossible to see:
so-called "No see 'um" zones



Not detectable by hand held XRF
because of high detection limits



Conventionally require
laboratory assay leading to
excessive delays in progressing
the exploration programs



**18 g/t "No see 'um"
Zone Lac des Iles**

Ratios R Us – A vector to high grade PGMs?²

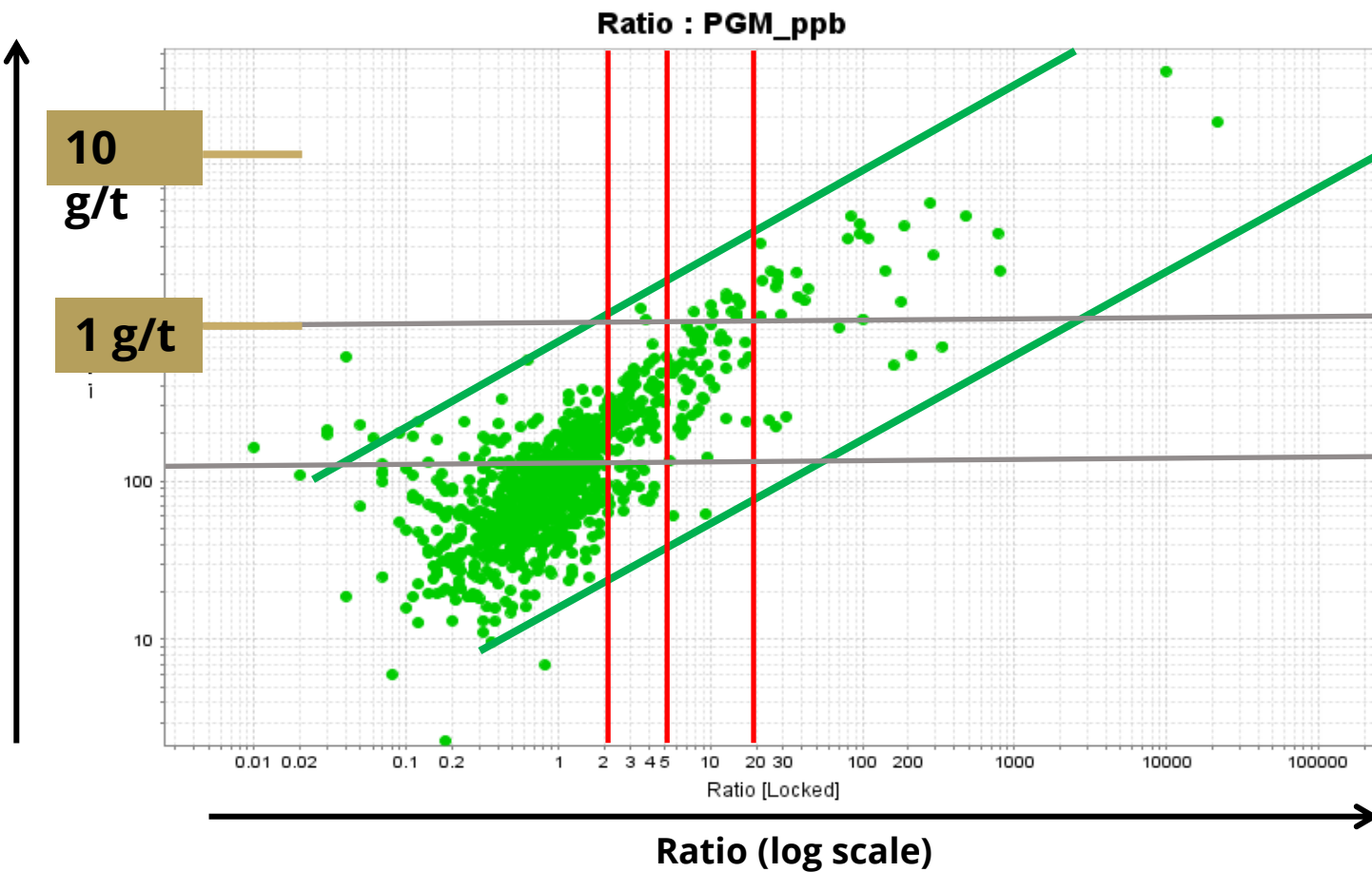
Impact breakthrough
geochemical ratio
that predicts PGE grade
and which can be read
with a hand held XRF
instrument as drilling
progresses

Palladium+
Platinum+
Gold (3PGE)

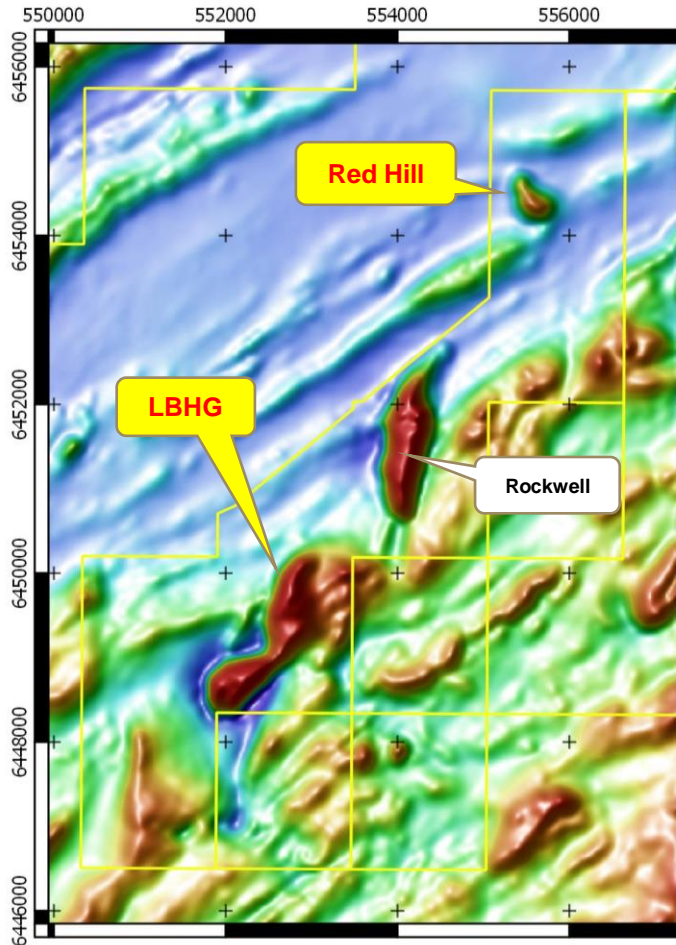
10
g/t

1 g/t

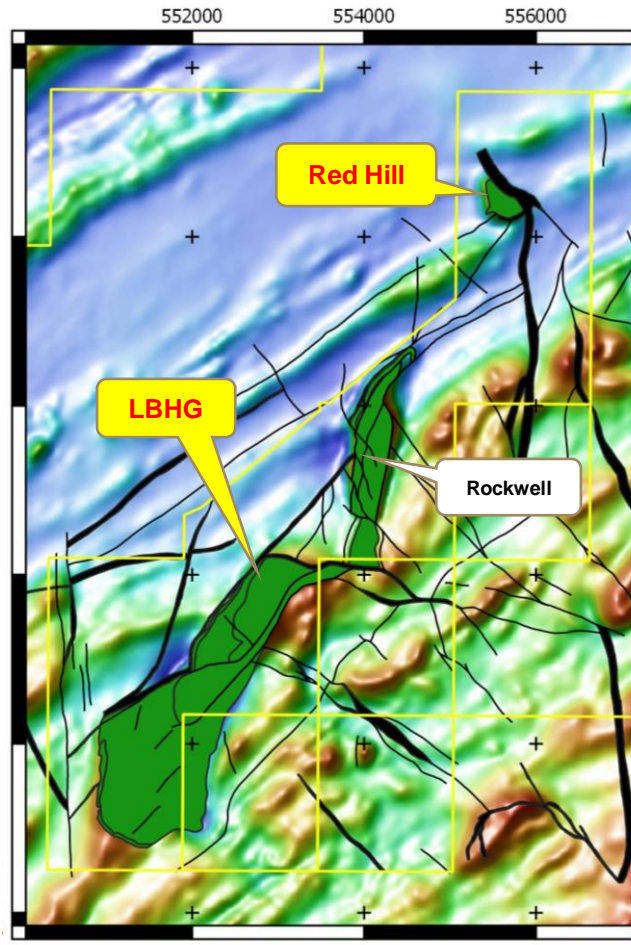
Laboratory Assay Data



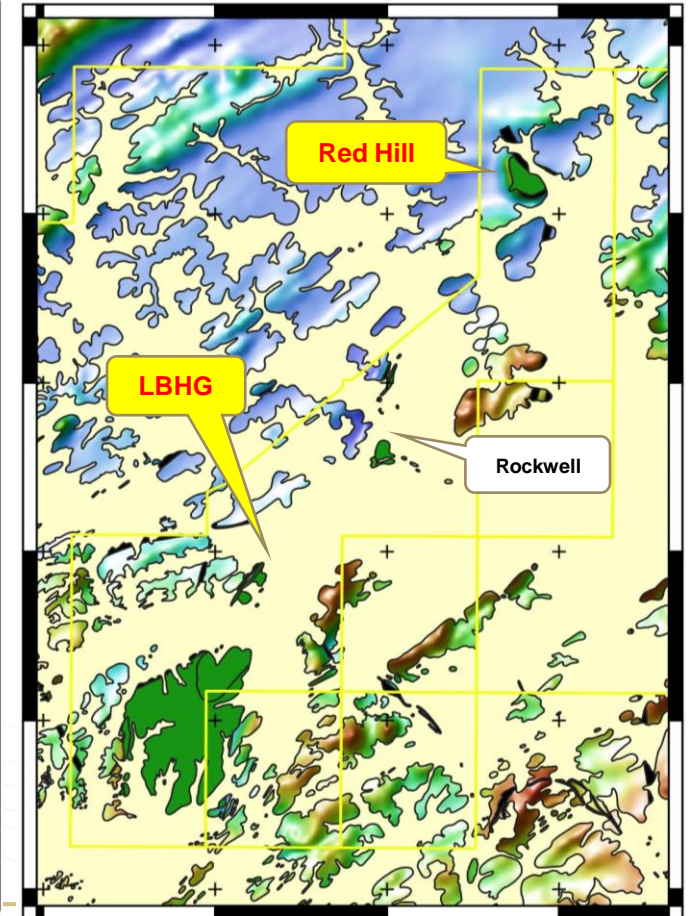
Little Broken Hill: 7 km long intrusion with one drill hole >25 m depth^{4,5}



Magnetic Data

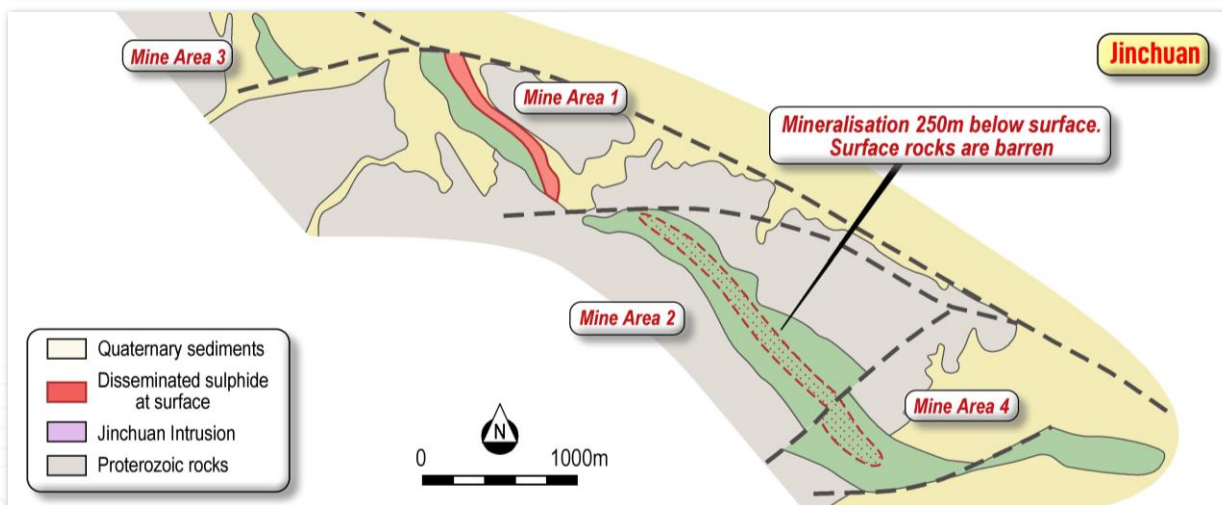
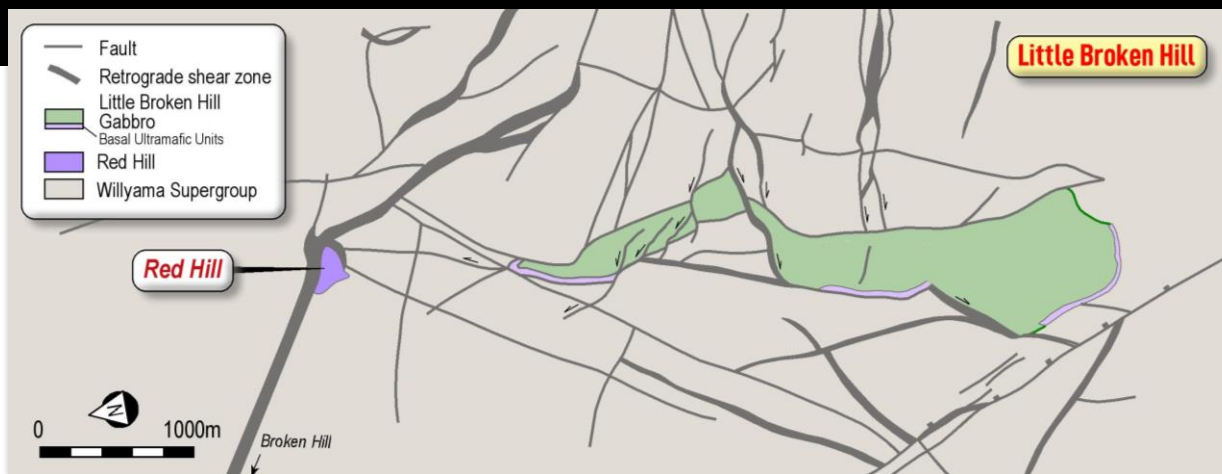


Extent of Gold



Extent of Cover

Little Broken Hill: Similar size and age to Jinchuan

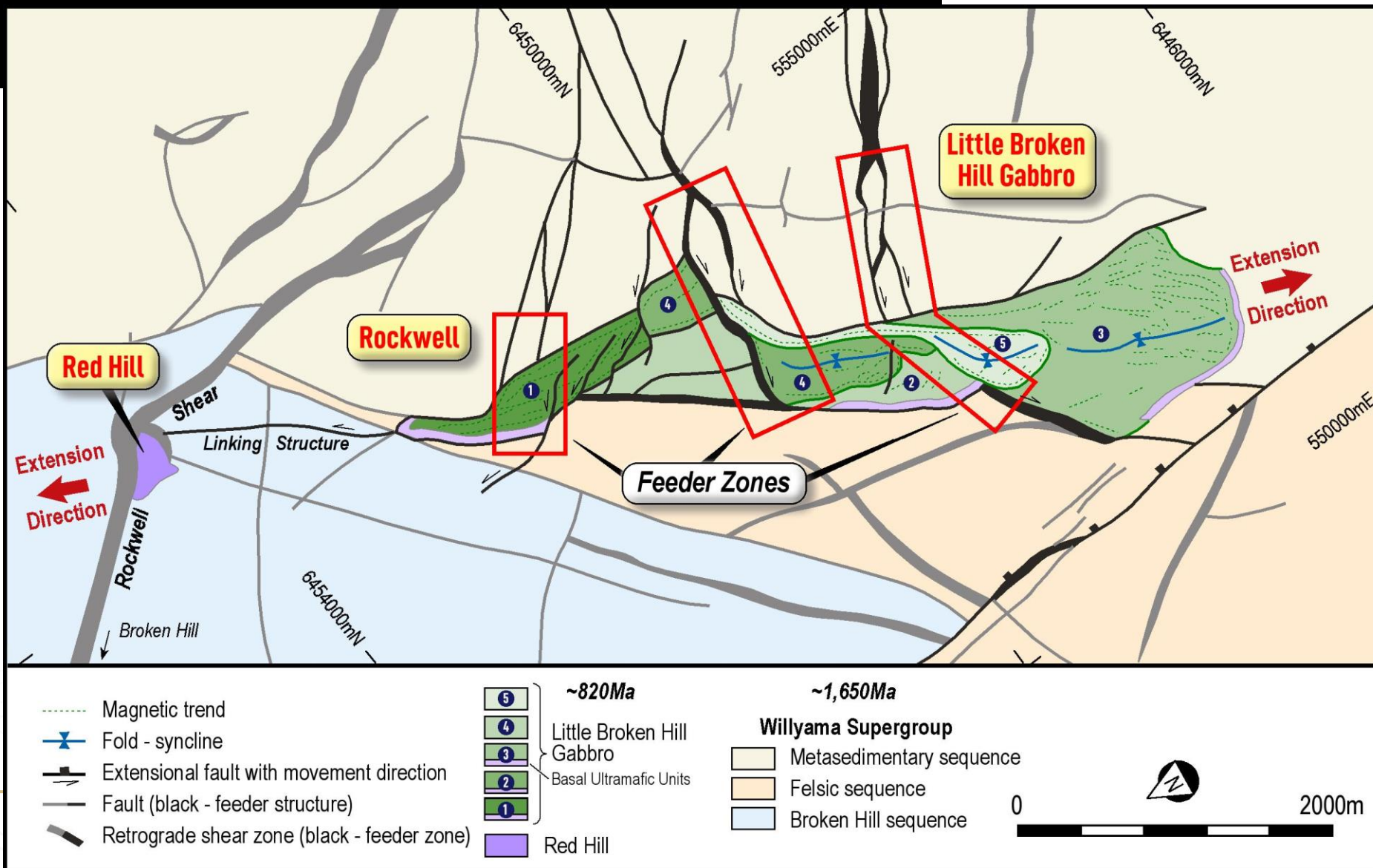


820 Ma

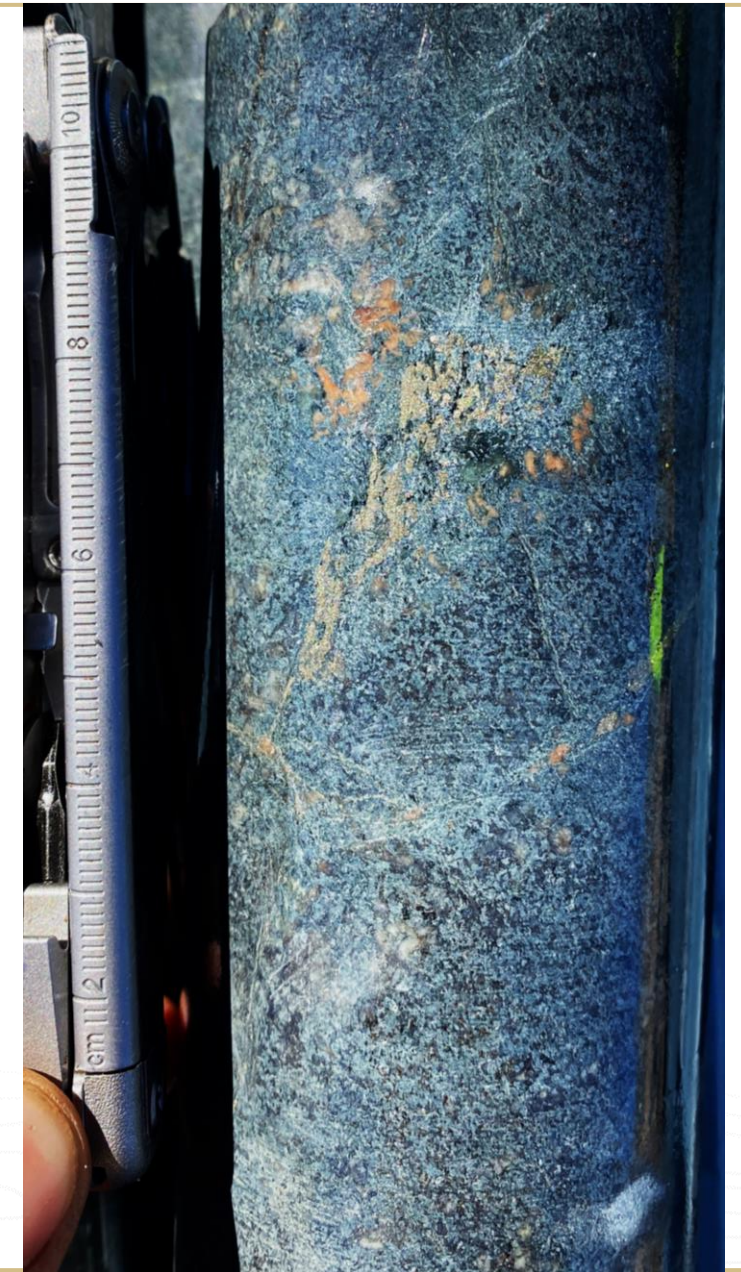
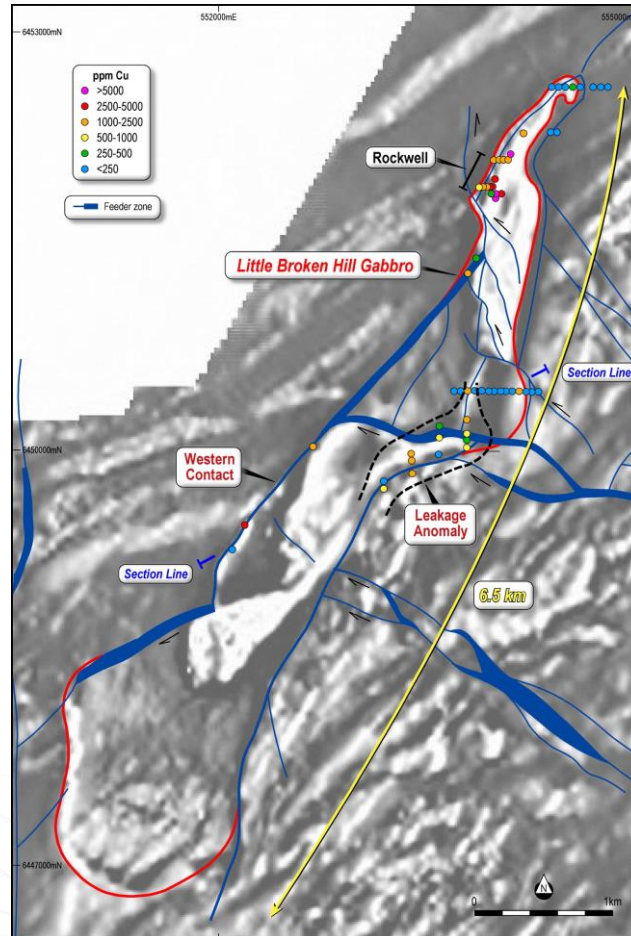
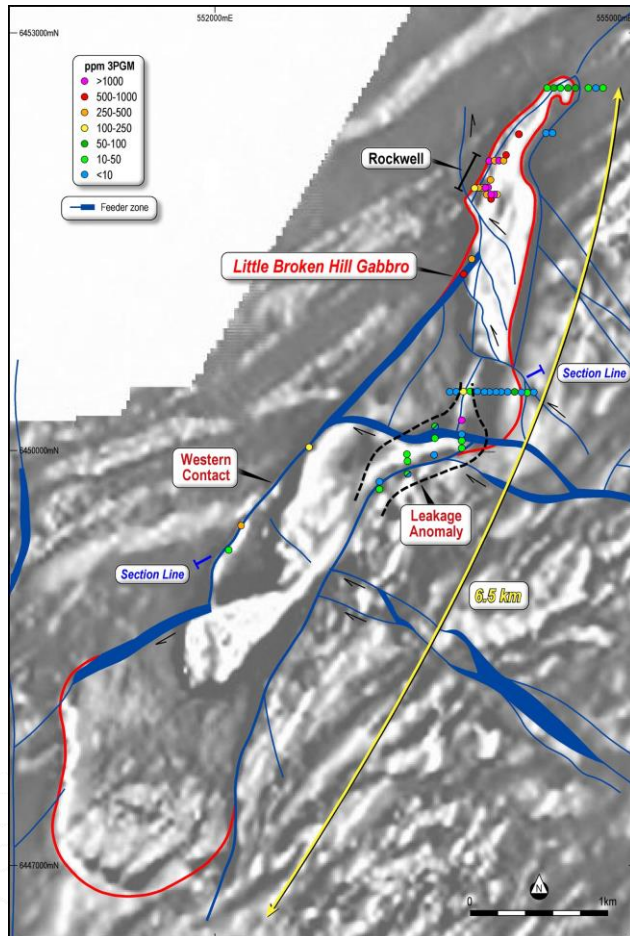


Right Place at the right time

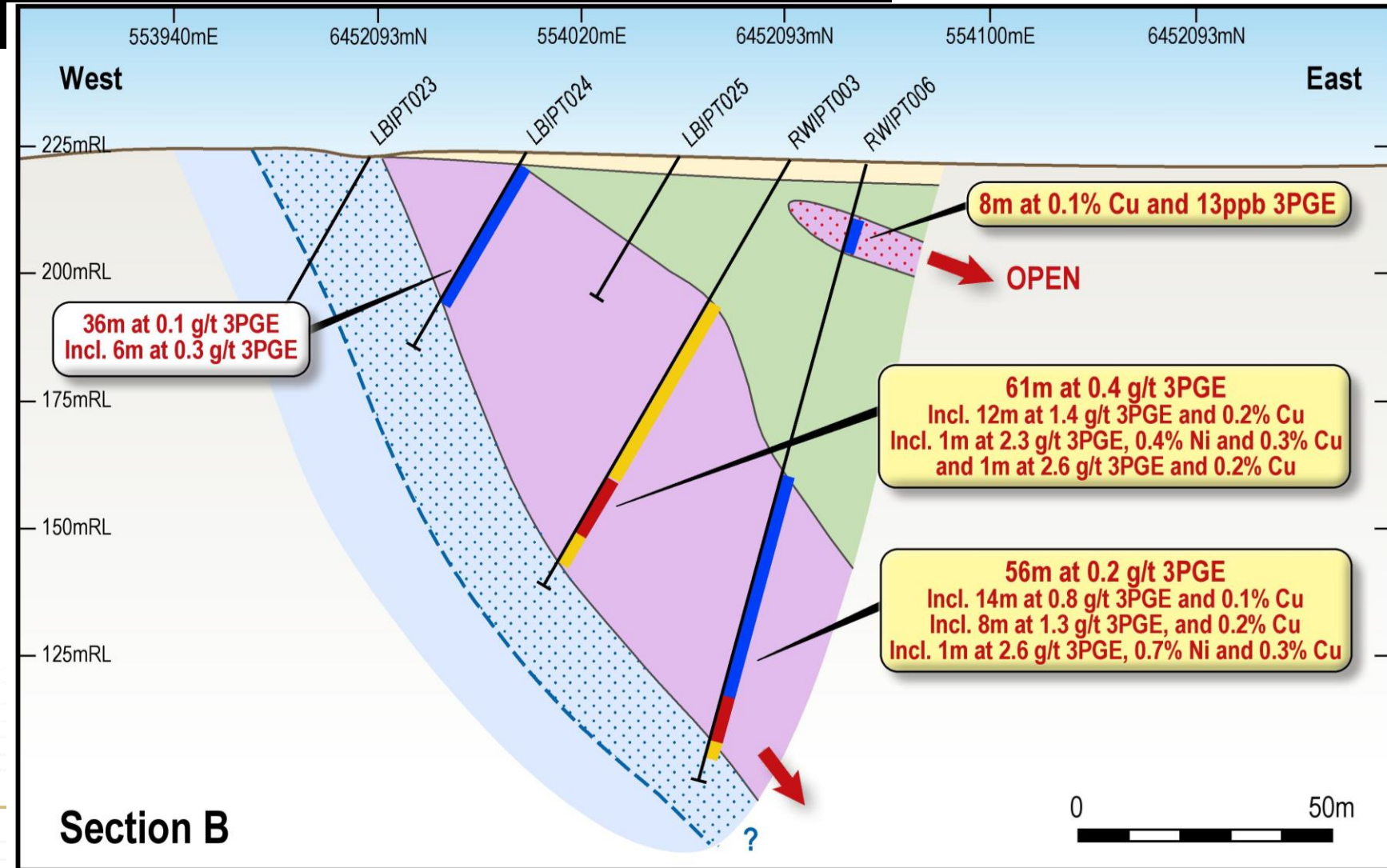
The gravity of the situation at Little Broken Hill



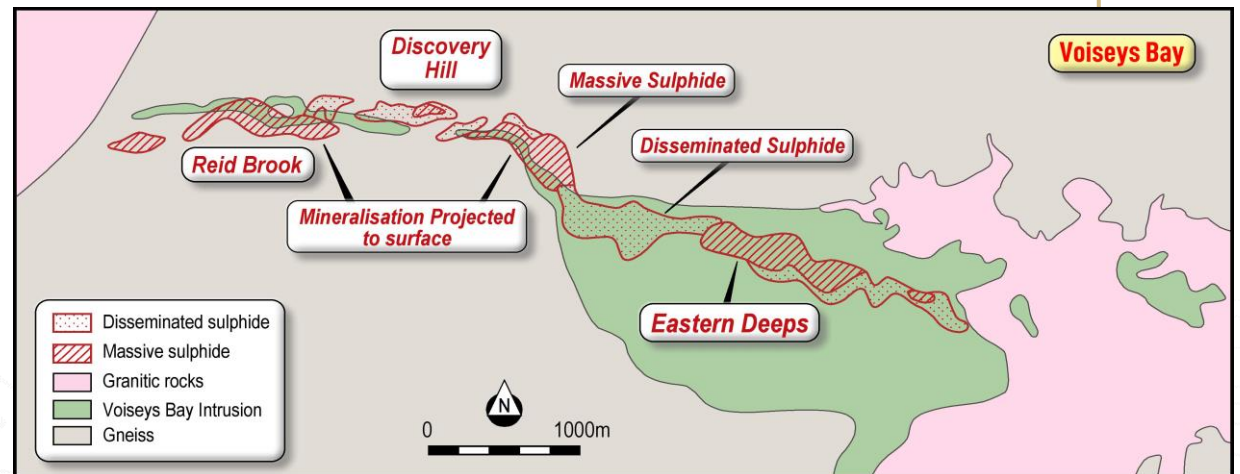
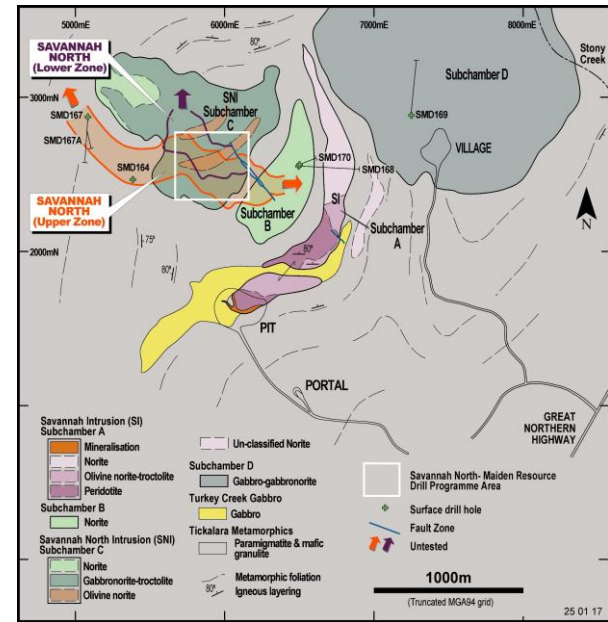
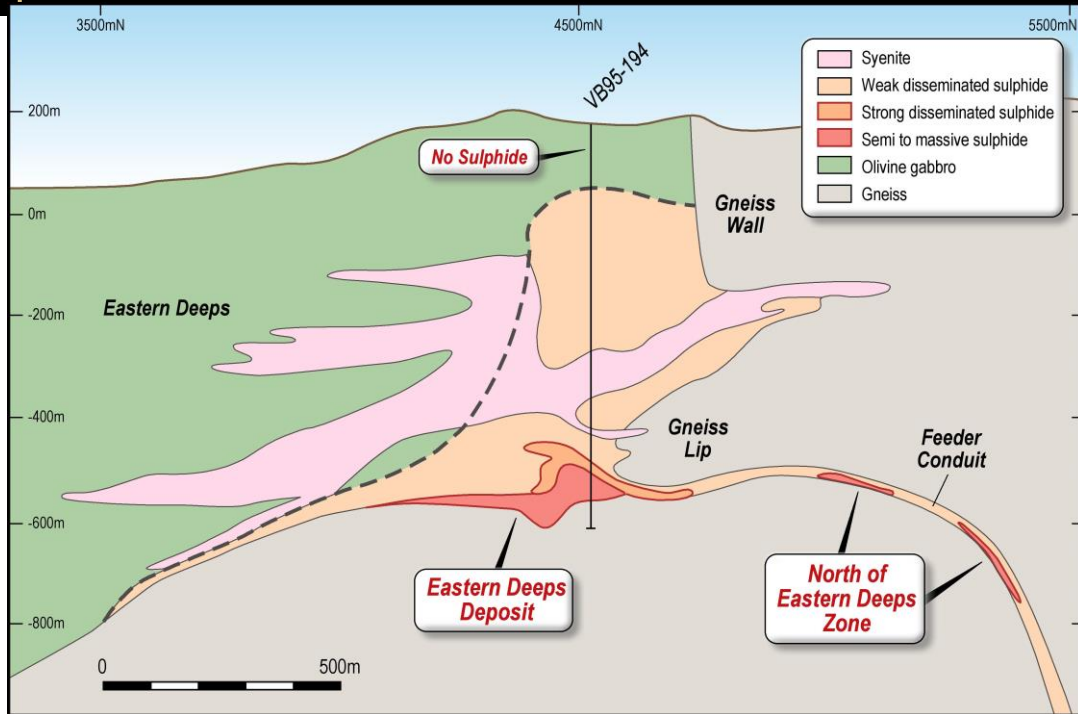
Little Broken Hill: Emerging discovery from first ever drill programme^{4,5}



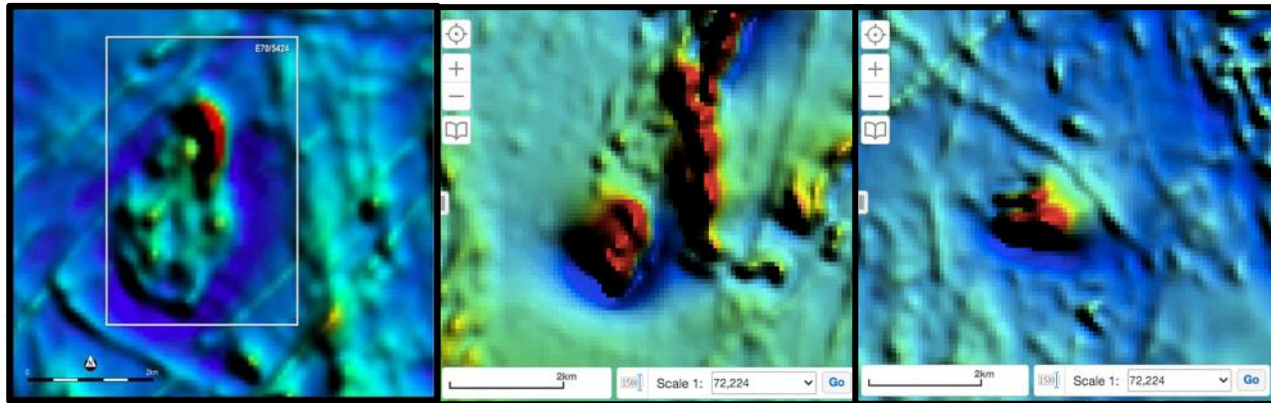
Little Broken Hill: Emerging discovery from first ever drill programme^{4,5}



Little Broken Hill: Voiseys Bay Feeders?



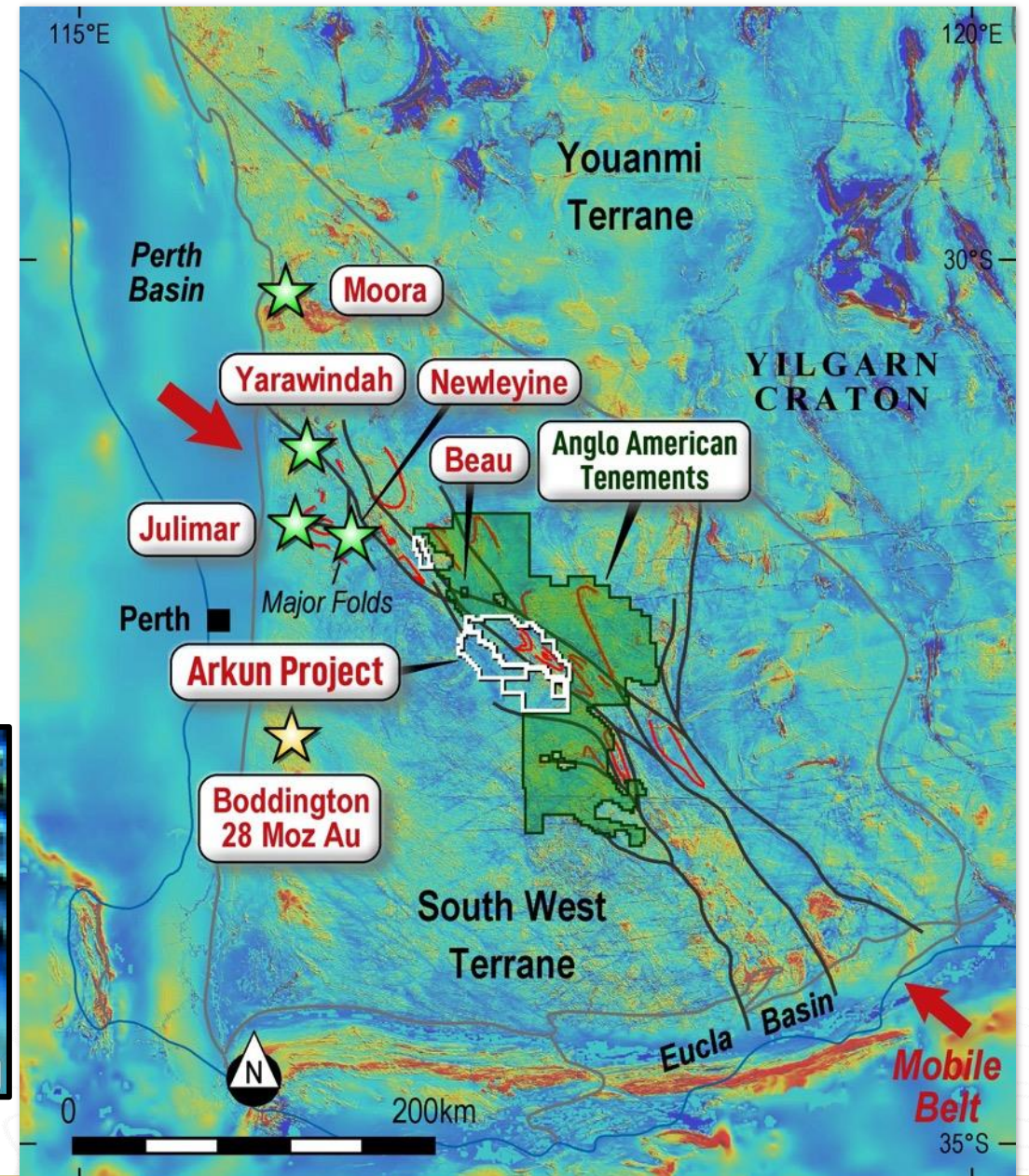
Arkun Project⁶ Emerging Ni-Cu PGM mineral province of SW Western Australia



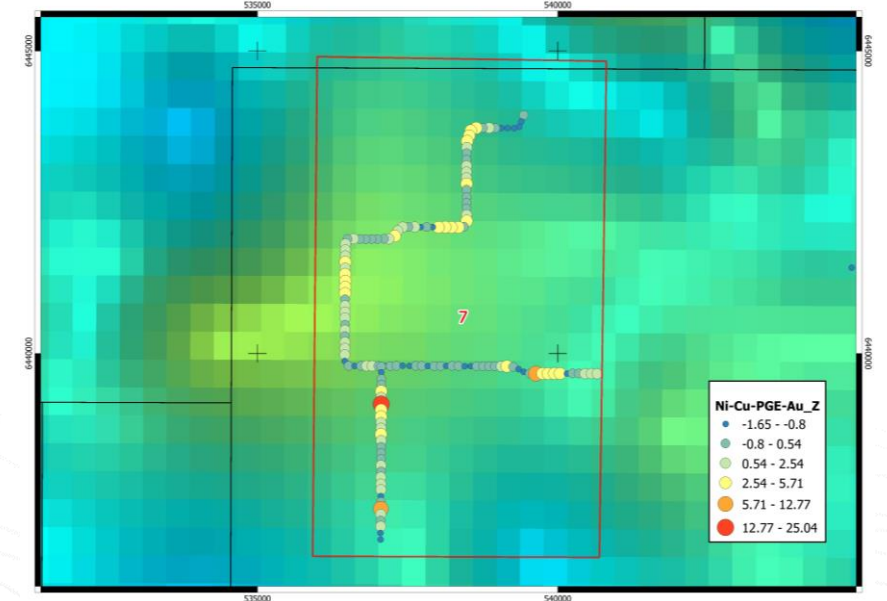
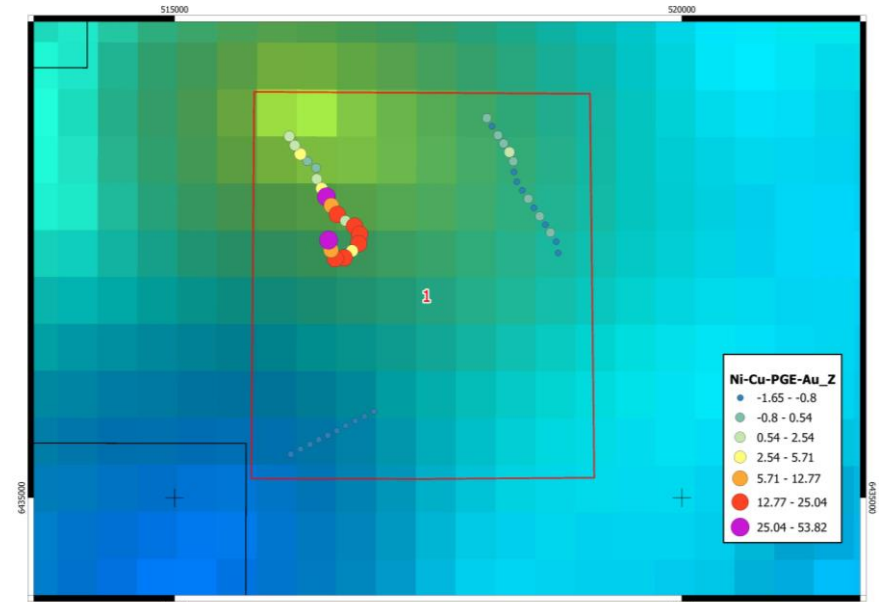
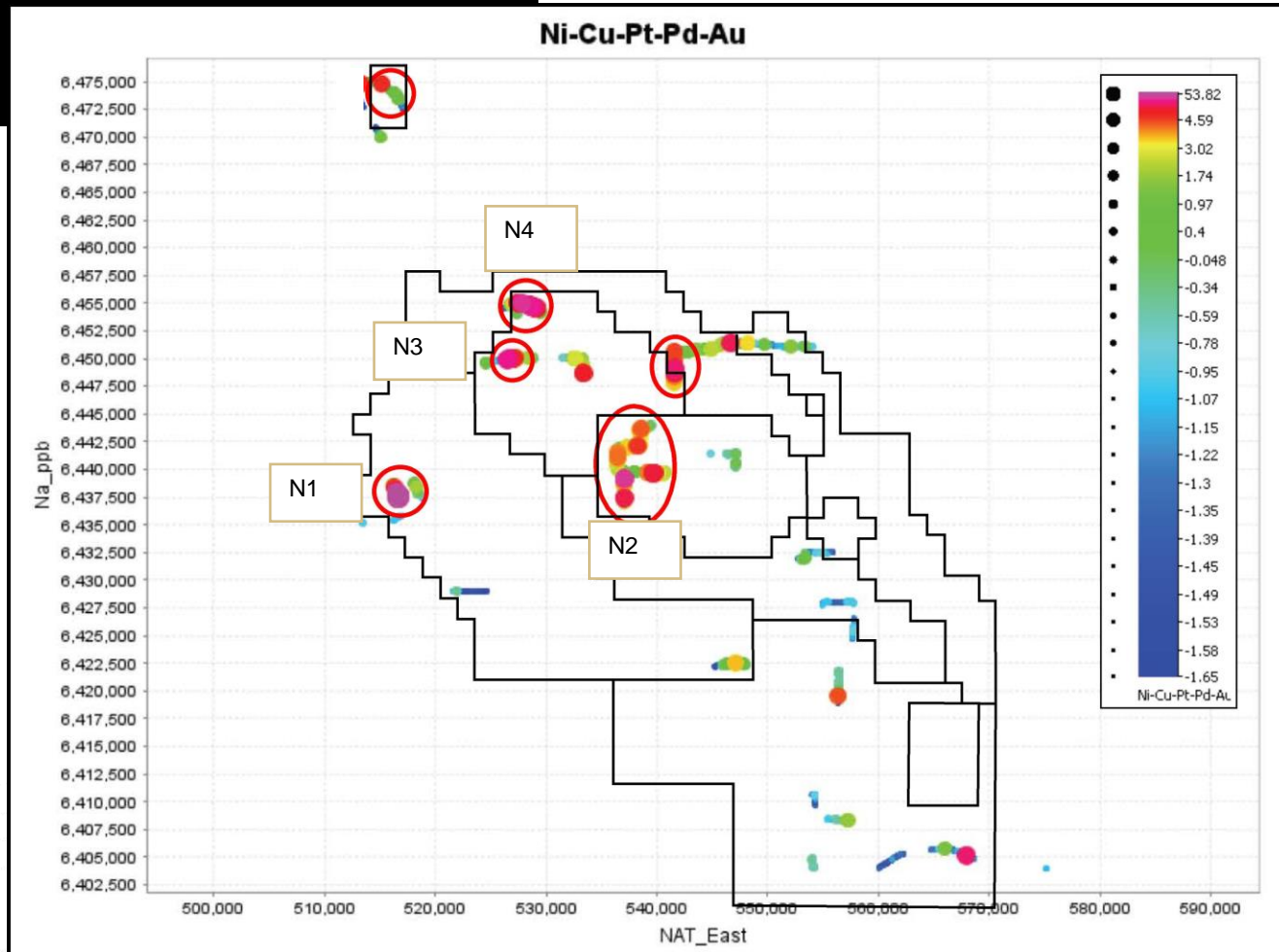
Beau

Julimar

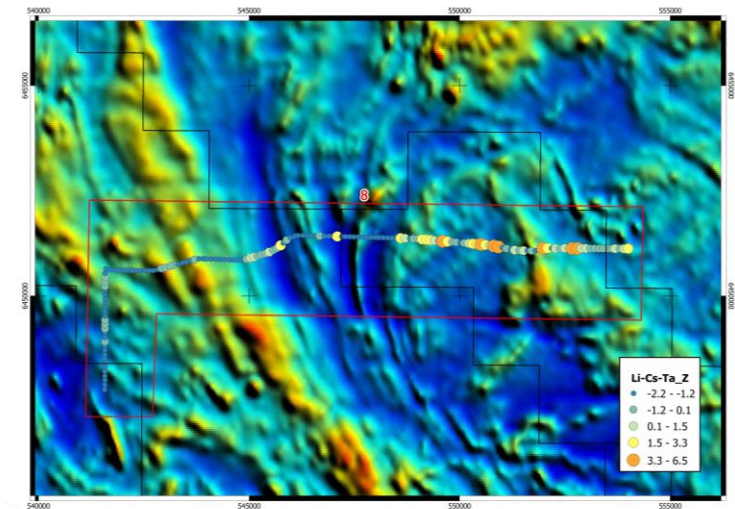
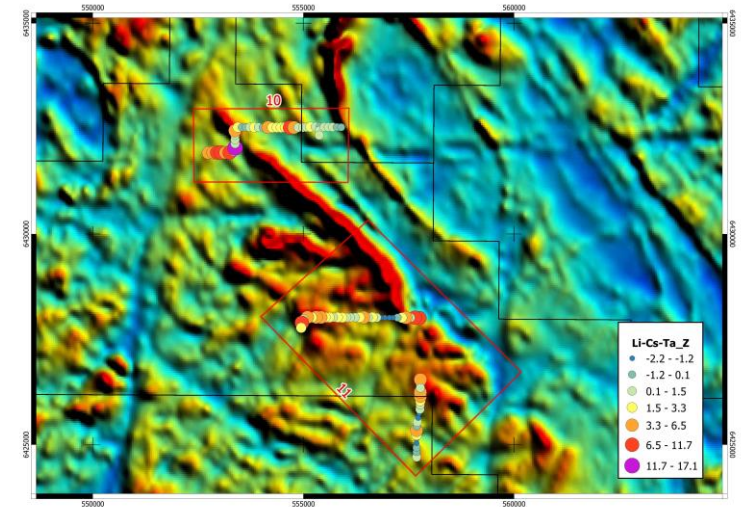
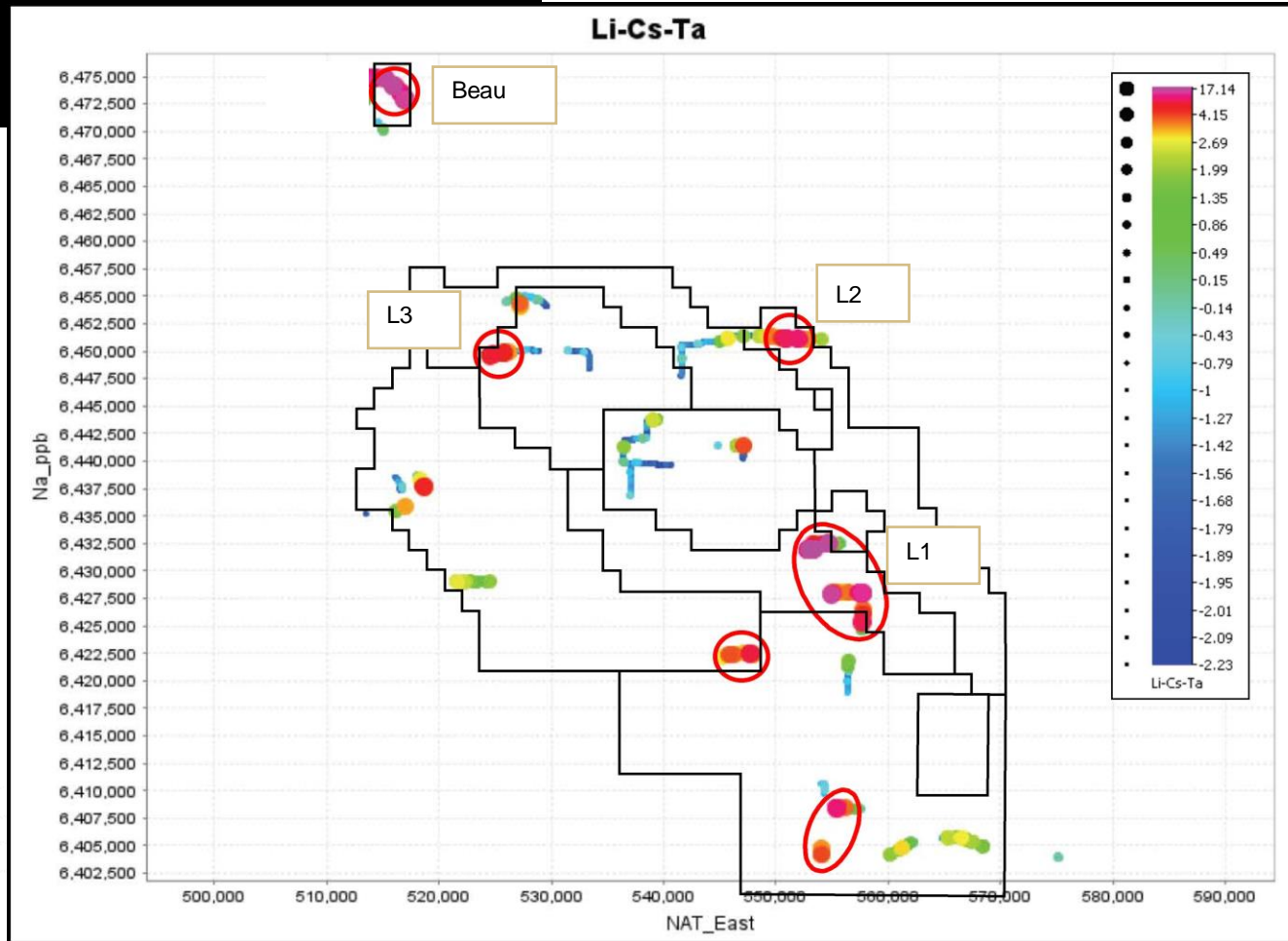
Newleyine

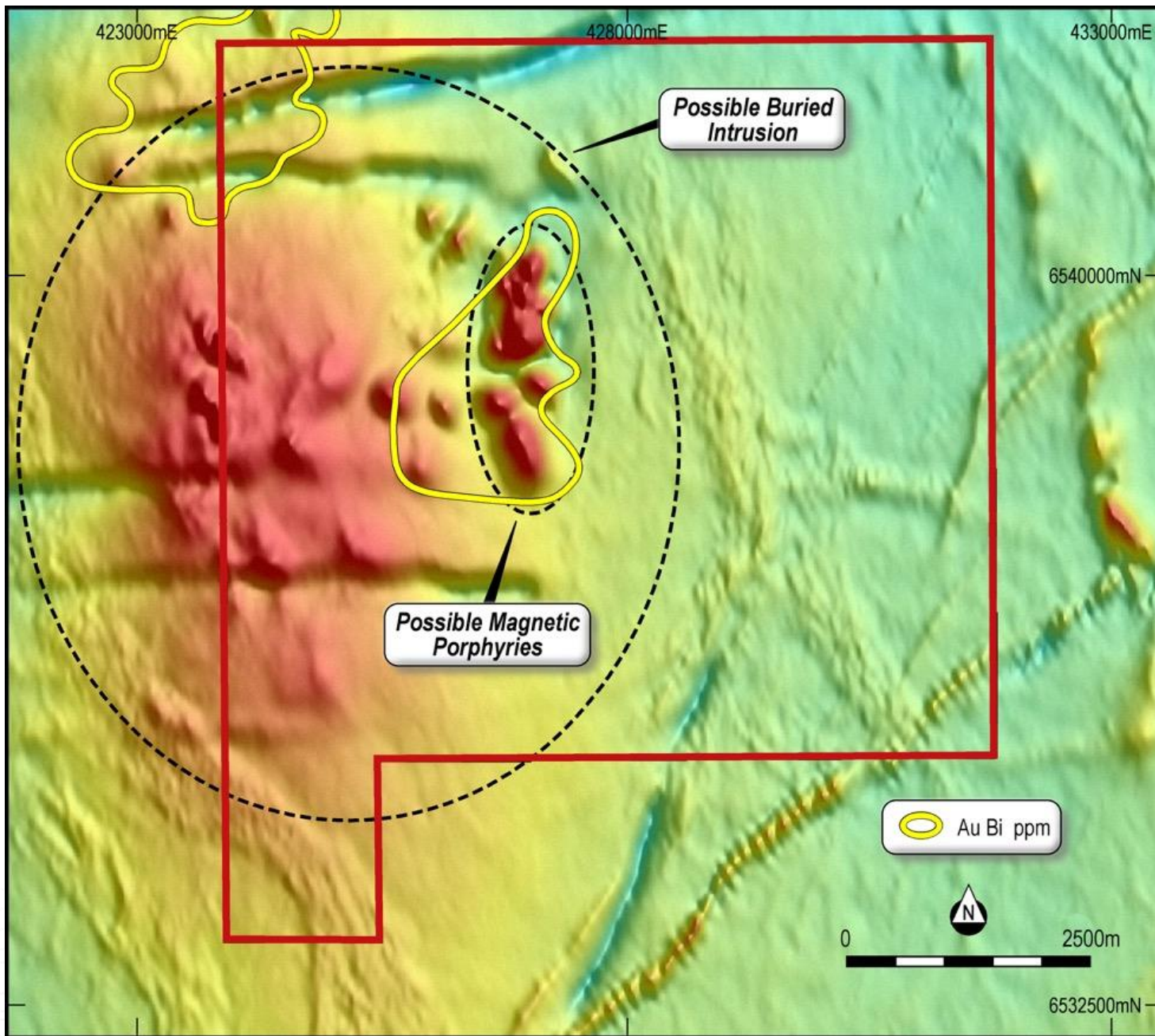


Arkun Project⁷ Ni-Cu-PGM



Arkun Project⁷ LCT Pegmatites

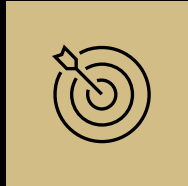




Doonia⁸ Yilgarn Craton, WA

Burns
discovery
New
mineralisation
style
Cu-Au-Mt

Next Steps and Strong News Flow

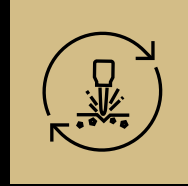


Drilling Q4 2021 **Doornia** (IPT 100%)

- First pass RC drilling of soil geochemistry anomaly.
- Programme of 3,000 metres

Arkun, WA (IPT: 100%)

- Follow up ground work in progress



Drilling in 2022 **Broken Hill, NSW** (IPT 100%)

- Follow up drilling at Platinum Springs, Red Hill and Little Broken Hill Gabbro
- Programme of 5,000 metres RC and diamond drilling



Portfolio Rationalisation

- Clermont: 1M shares in A8G
- Orange Minerals Ltd \$180K cash and \$54k shares.
- Discussions in progress on various projects

JORC Compliance

The information in this presentation relating to Exploration Results has been extracted from the following reports:

ASX Release Date	Title of ASX Release
1. 23 February 2016	Very high grade PGM nickel-copper in massive sulphide at Platinum Springs
2. 26 October 2020	Vectoring in at Platinum Springs, Broken Hill, NSW
3. 2 December 2020	High grade Ni-Cu-PGE at Plat Central, Broken Hill
4. 9 July 2020	The gravity of the situation at Little Broken Hill NSW
5. 22 December 2020	Rockwell Prospect drilling results
6. 10 June 2020	Expansion of the Arkun Ni-Cu-PGE Project east of Perth
7. 21 September 2021	Outstanding soil results at Arkun
8. 17 November 2020	New gold project in the Eastern Goldfields: Doonia, WA

Disclaimer

What You Should Know

Find out more – This presentation is being used as a presenter's aid with summarised information. See Impact's other periodic and continuous disclosure announcements lodged with the Australian Securities Exchange, which are available at www.asx.com.au or www.impactminerals.com.au, for more information.

Third party information – Impact does not make any representations as to the accuracy or otherwise of third party information, including where projections are given.

Forward-looking statements – Within this presentation there may be certain forward-looking statements, opinions and estimates. These are based on assumptions and contingencies which are subject to change without notice and are not guarantees of future performance. Impact assumes no obligation to update such information.

Taking action – Please undertake your own evaluation of the information in this presentation and contact your professional advisers if you wish to buy or sell Impact shares.

Competent Person Statement and JORC Compliance Exploration Results: *The review of exploration activities and results contained in this report is based on information compiled by Dr Mike Jones, a Member of the Australian Institute of Geoscientists. He is a director of the company and works for Impact Minerals Limited. He has sufficient experience which is relevant to the style of mineralisation and types of deposits under consideration and to the activity which he is undertaking to qualify as a Competent Person as defined in the 2012 edition of the Australasian Code for Reporting of Exploration Results, Mineral Resources and Ore Reserves (the JORC Code). Mike Jones has consented to the inclusion in the report of the matters based on his information in the form and context in which it appears.*

The ASX Releases referenced below on on the Impact Minerals website at www.impactminerals.com.au. The Company confirms that it is not aware of any new information or data that materially affects the information included in the most recent market announcement for each project, and in the case of Mineral Resources and Ore Reserves, that all material assumptions and technical parameters underpinning the estimates in the relevant market announcement continue to apply and have not materially changed. The Company confirms that the form and context un which the Competent Person's findings are presented have not materially changed from the original market announcement.